

B C D

360

B C

(10s)

A

B C

6.2.1.

100G/H

12 /

6.2.2.

24

6.2.3.

1

6.2.4.

1

2

6.2.5.

7.1.

85

3min

8.1.

2

8.2.

8.3.

360

8.4.

9.1.

1

PH 12

9.2.

4

9.3.

2

9.4.

10.1.

10.2.

10.3.

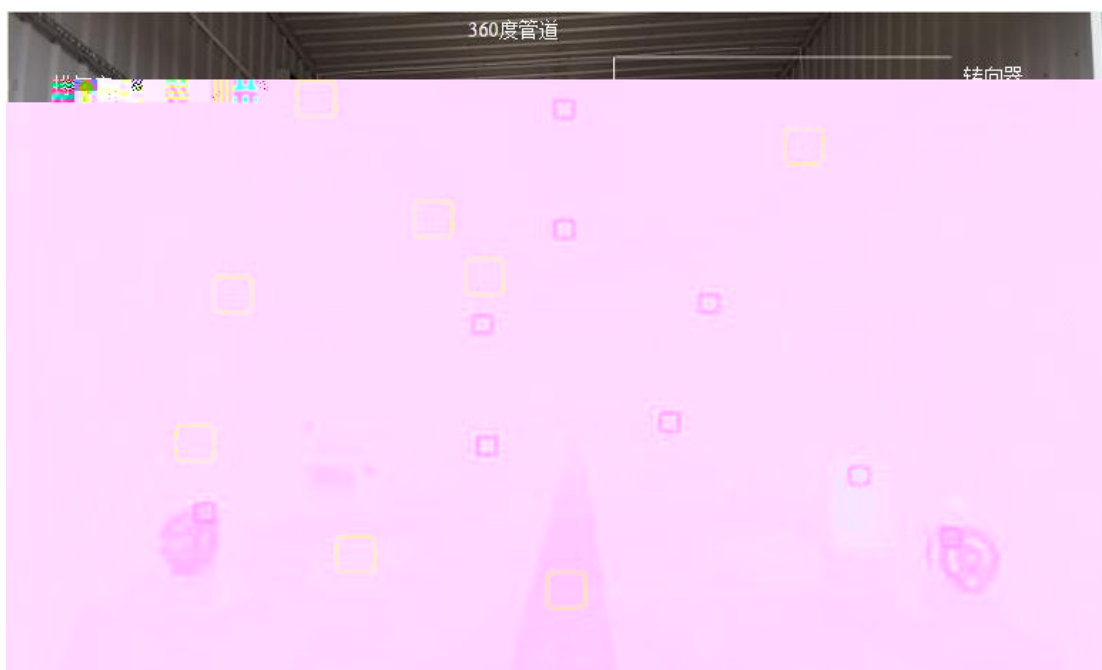
10.4.

10.5.

10.6.

11.1.

1.



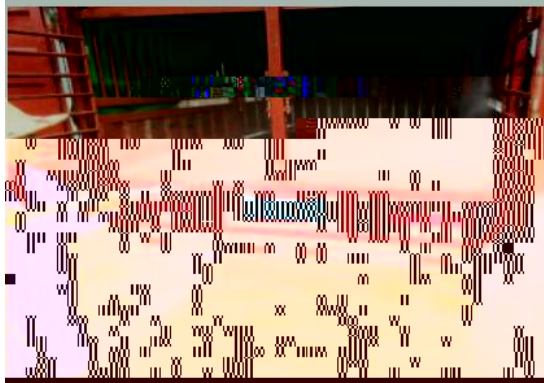
高压水枪



泡沫机



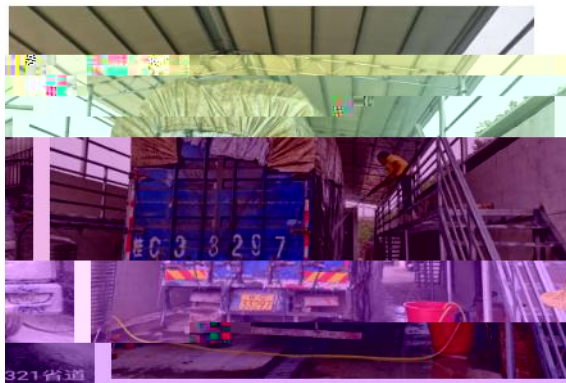
整车冲洗



驾驶室脚垫冲洗



整车冲洗



使用泡沫浸泡



使用消毒剂喷洒



脉冲喷雾机



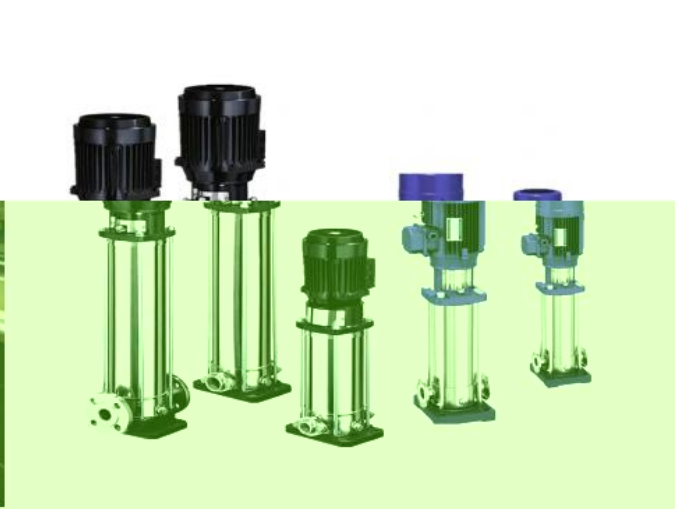
驾驶室雾化消毒机

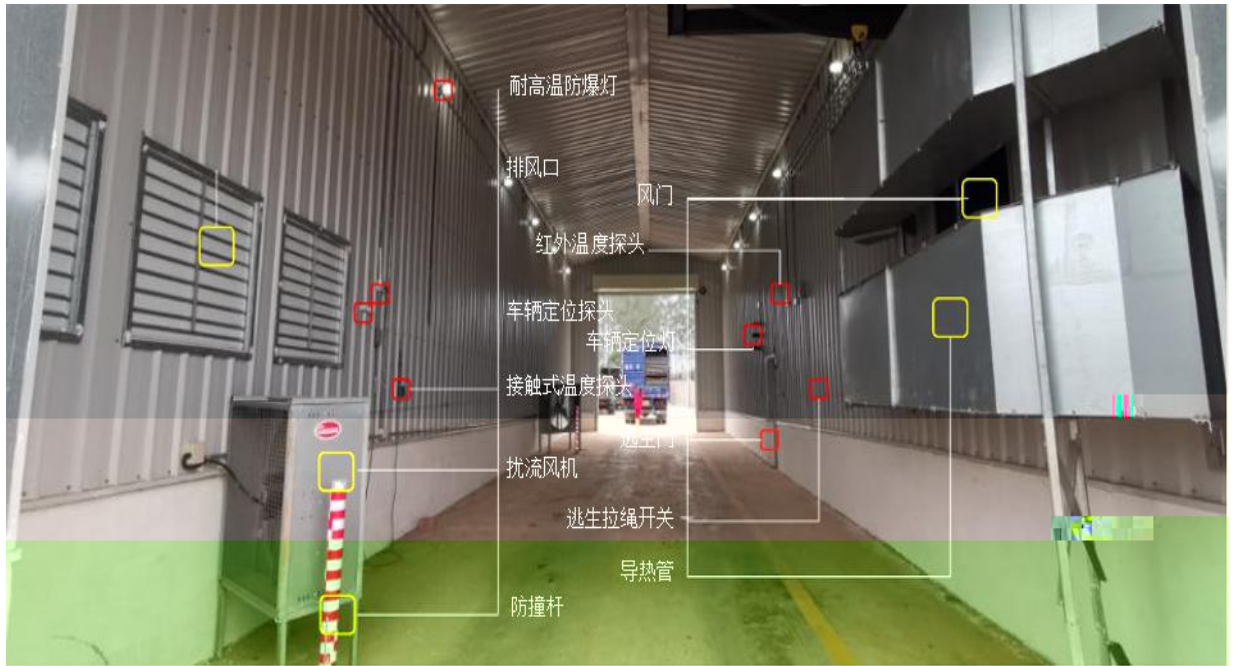


自动配比加药系统



立式高压泵





2.

A

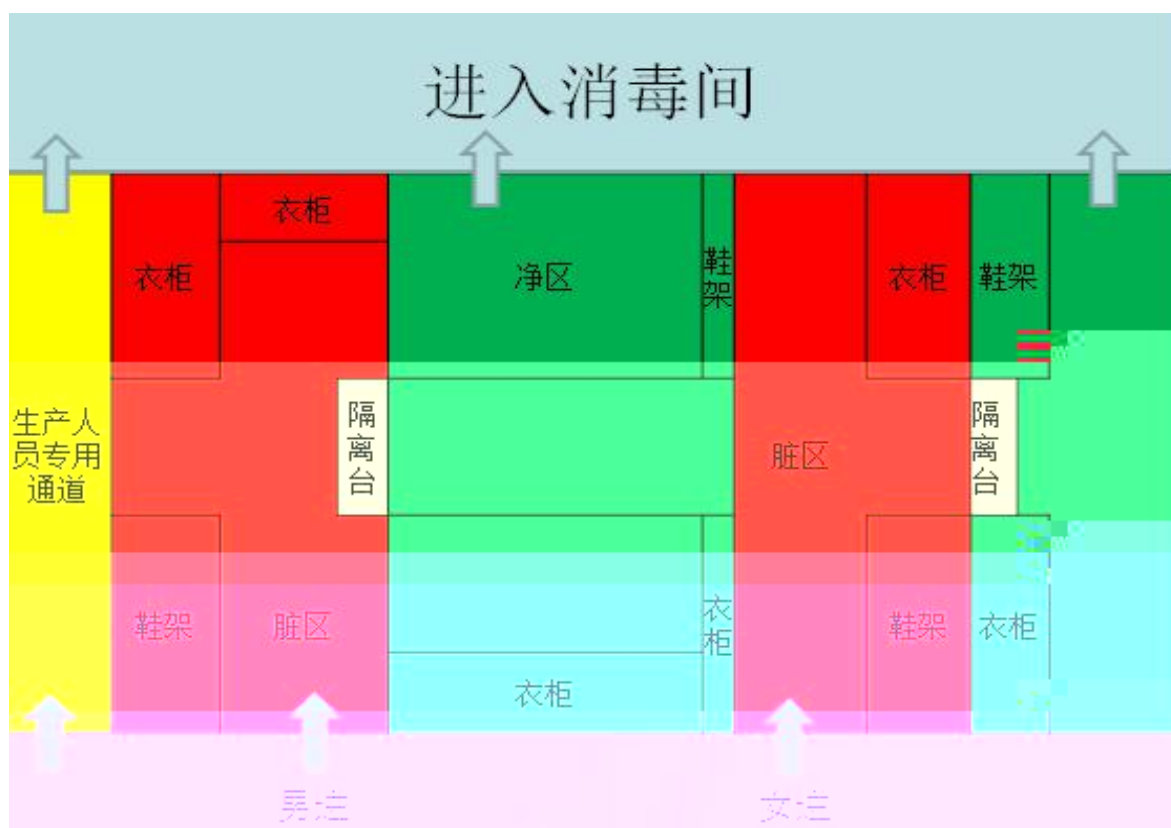
70

20min

36

45

5%



鞋底消毒池

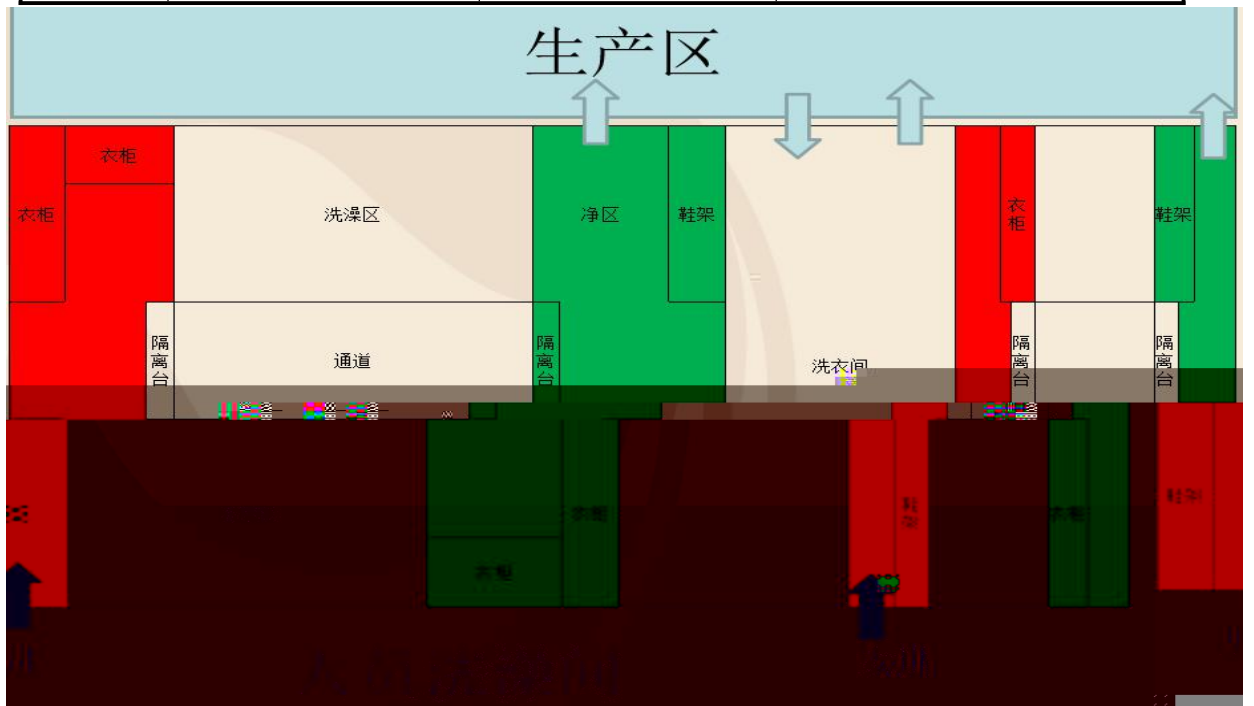


1min

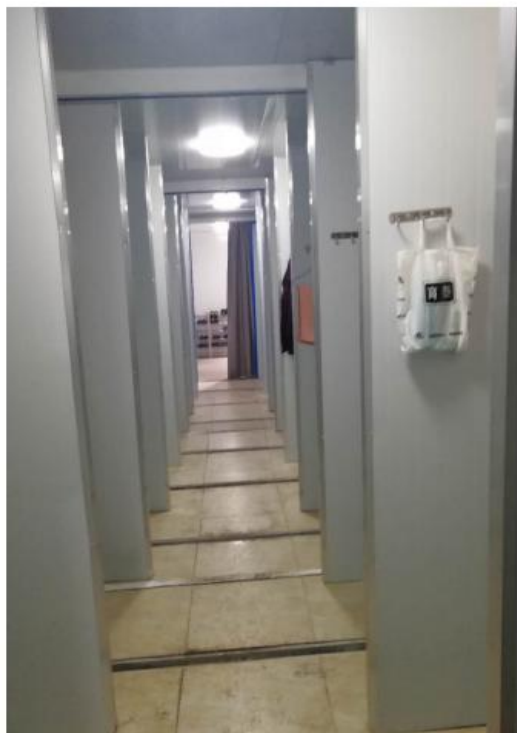
雾化消毒器



10s



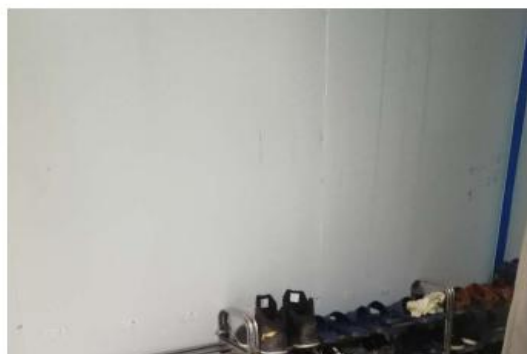
洗澡间



衣柜



鞋架



洗衣房



2.

1.

2.

24H

1.

2.

3.

4.

5.

6.

7.

1M

8.

9.

1.

2.

